

WABASH



BRAIN BREAK

W.

Where's Wally?

Can you find Wally in the crowd?



W.

"Old Wabash"

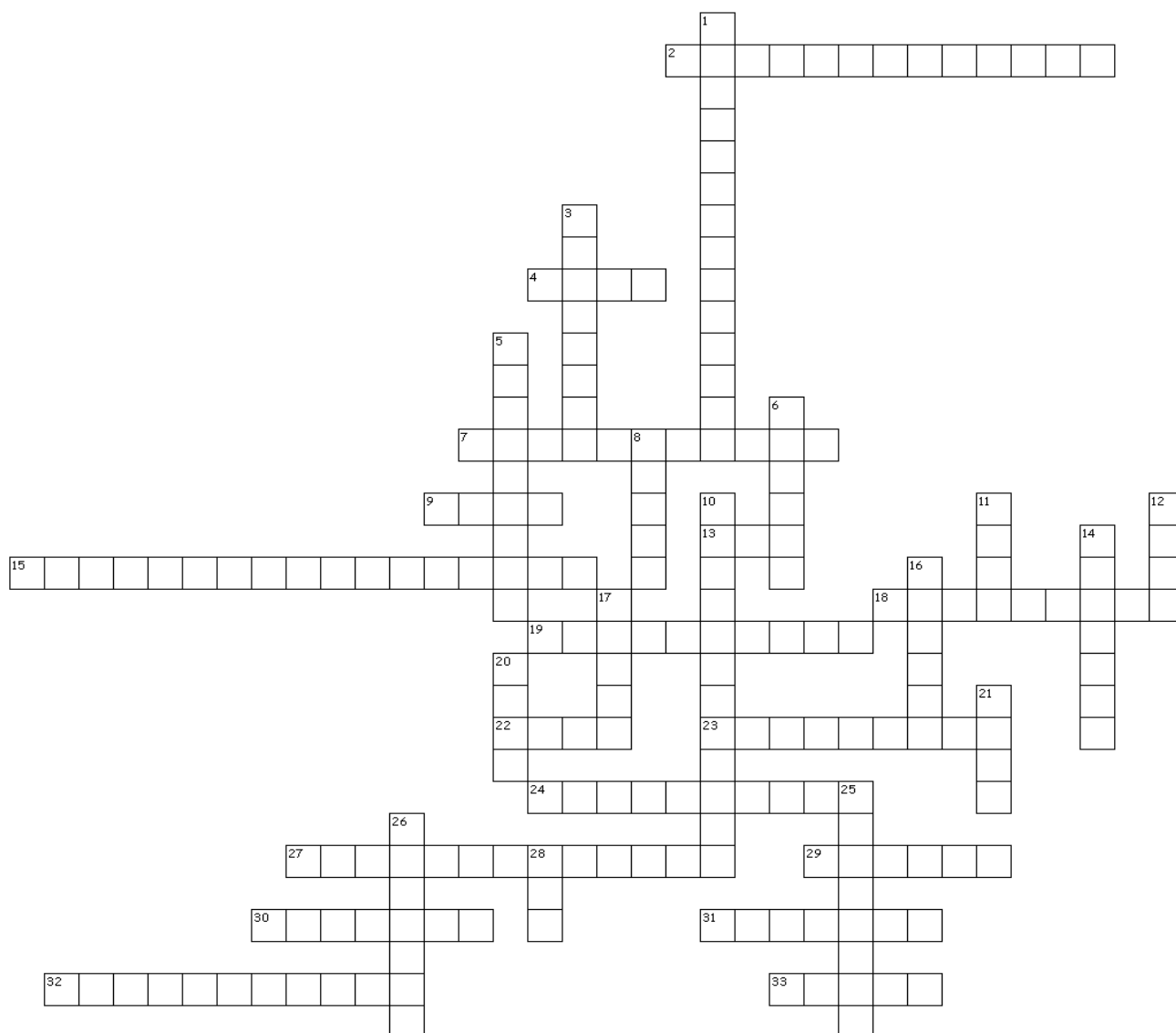
S S S T H E E V O L T E C E W D M F O U R U
I E A I T O D E T T E T L S E E T L L T A P
I A N D N P H N T S E R A E D W T M W A E S
E H C T U A N N T E O C S N A C E E A T G T
E B C G N I S I N T D E S N O D N M B D S E
V R C O L D L A E E E A I A T E L R A C S F
E S N W N L L L S E H A C E H G C I S O O I
R D E T E H A E E W N F E U H E L E H E O D
T C H L O S H H I S D H H S A L F S E G N T
N S E S S E O O S H T L L G N O L E L O S A
I L L E W N E N E N S N S O R E E R C W A K
Y L D U O R P T S R W N C L E E A E O O M R
E R S A P G F Y I R E L O Y A L I I E H E T
D U G D L Y H E A R T S F M O V D N S N M G
S S P C C T H E R A A L H O R E W Y E O T T
O S D E T N B O P N U E H N N H A O U T E E

WORD BANK: THE CHORUS OF "OLD WABASH"

AND	EVER	HALLS	LOYAL	OLD	SCARLET	SWEETEST	WABASH
BEAR	FLAG	HEARTS	MEM'RIES	OUR	SHALL	THE	WE
CLASSIC	FLASH	LONG	O'ER	PRAISES	SING	THEE	WE'LL
DEAR	IN	LOVE	OF	PROUDLY	SONS	THY	



Wabash College



ACROSS

2. Classics
4. Gregory D.
7. Award-winning newspaper
9. Monon and Caleb Mills
13. Anyone can play
15. Long-lasting inquiries
18. "Dear...
19. Homecoming tradition
22. Wabash only has one of these
23. Travel the world
24. Largest dorm
27. Cookware and solid lines
29. Wabash always
30. Large party
31. Dean of Students
32. Covered with layers of paint
33. Mascot

DOWN

1. Our city
3. Blue blazers and red ties
5. Married housing
6. First campus building
8. All-encompassing test
10. Small Goliaths
11. 1832
12. Don't walk under it
14. Chadwick
16. They're No. 1
17. Where the hills are
20. Learn, Earn, Play, Lead
21. Nine men knelt in this
25. He looks out Lilly Library
26. WDPD is part of this
28. Number of fraternities



Wabash Spot the Differences

Can you find the seven differences in these two photos?



Wabash Spot the Differences

Can you find the ten differences in these two photos?



Wabash Abbreviated

How many of these Wabash College related acronyms and initialisms do you know?

- | | |
|-----------------------|-----------------------|
| 1. WABASH Day _____ | 21. QSC _____ |
| 2. NAWM _____ | 22. ENS _____ |
| 3. EQ _____ | 23. AMPED _____ |
| 4. APO _____ | 24. WAR Council _____ |
| 5. WAF _____ | 25. PPE _____ |
| 6. WNDY _____ | 26. SAAC _____ |
| 7. FAFSA® _____ | 27. WISE _____ |
| 8. GHI _____ | 28. FERPA _____ |
| 9. CIBE _____ | 29. PBK _____ |
| 10. WDPD _____ | 30. MOWNBU _____ |
| 11. IFC and IMA _____ | 31. ULEQ _____ |
| 12. UPS _____ | 32. ACE _____ |
| 13. FAC _____ | 33. WM _____ |
| 14. NCAC _____ | 34. BIP _____ |
| 15. MXIBS _____ | 35. ETC _____ |
| 16. IT _____ | 36. SBIF _____ |
| 17. IRB _____ | |
| 18. LOL _____ | |
| 19. PIE _____ | |
| 20. TALL _____ | |



Wabash Word Jumble

Unscramble these Wabash related terms

- | | |
|--------------------------------|----------------------------|
| 1. NERTCE ALHL _____ | 21. HEOOODBRRHT _____ |
| 2. AW.HSBA _____ | 22. KITNH LITICCARLY _____ |
| 3. RATLSEC _____ | 23. UMRATREBO _____ |
| 4. TEILTL TSGANI _____ | 24. GNNIRIG NI _____ |
| 5. EONIPER HPLCAE _____ | 25. CHIPASHOSLR _____ |
| 6. ORIEMSINM GNLAENR _____ | 26. SXNIHP LBCU _____ |
| 7. RNYPAHLPIHTO _____ | 27. ILNAMU TEKROWN _____ |
| 8. JRMOA _____ | 28. PTO DARNEK _____ |
| 9. LYAWL _____ | 29. AVONOCTI _____ |
| 10. NRSOEI HENBC _____ | 30. CAT SNRSEPLIYOB _____ |
| 11. VILE UNALHYME _____ | 31. ALHPEC KLAT _____ |
| 12. NHEYIR GRUERB _____ | 32. MMMOTNNCCEEE _____ |
| 13. DOL ASBWHA _____ | 33. LLIINGMA OCLKC _____ |
| 14. HBAWSA SLAYWA GSFTIH _____ | 34. ETH HACR _____ |
| 15. LFHOSEPLWSI _____ | 35. NNMOO LBLE _____ |
| 16. ERCRAE RVCSEISE _____ | 36. 8213 RWEB _____ |
| 17. YFTAERRTNI _____ | 37. BALCE LLISM _____ |
| 18. DELA TVFYFCIEEEL _____ | 38. TTDESUN ELFI _____ |
| 19. PHAONMIC _____ | 39. HET HALRBCEO _____ |
| 20. HWXBASA _____ | 40. ERADLOVLRWFSCI _____ |



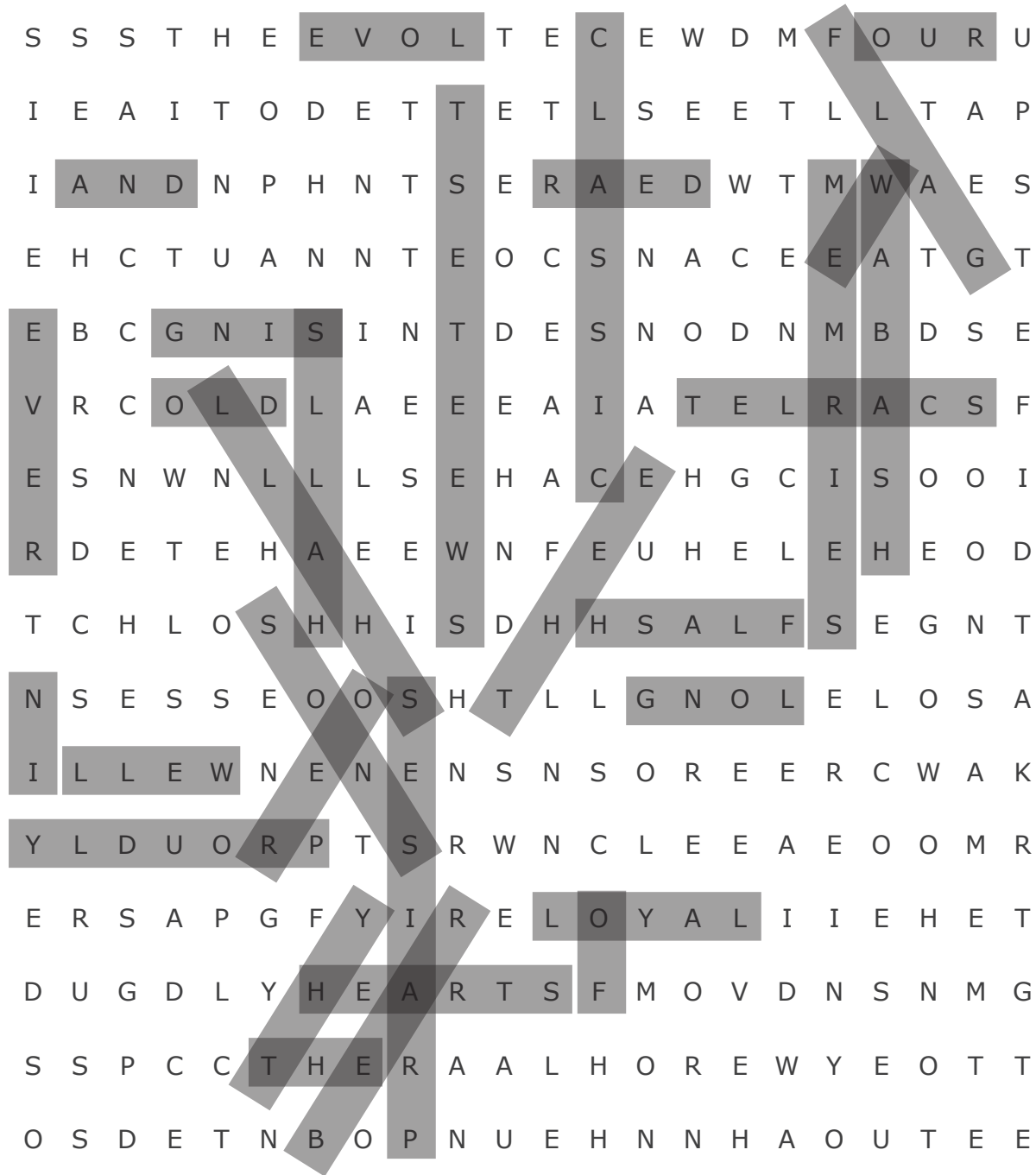
Answer Key

Where's Wally?

Answer Key



"Old Wabash"

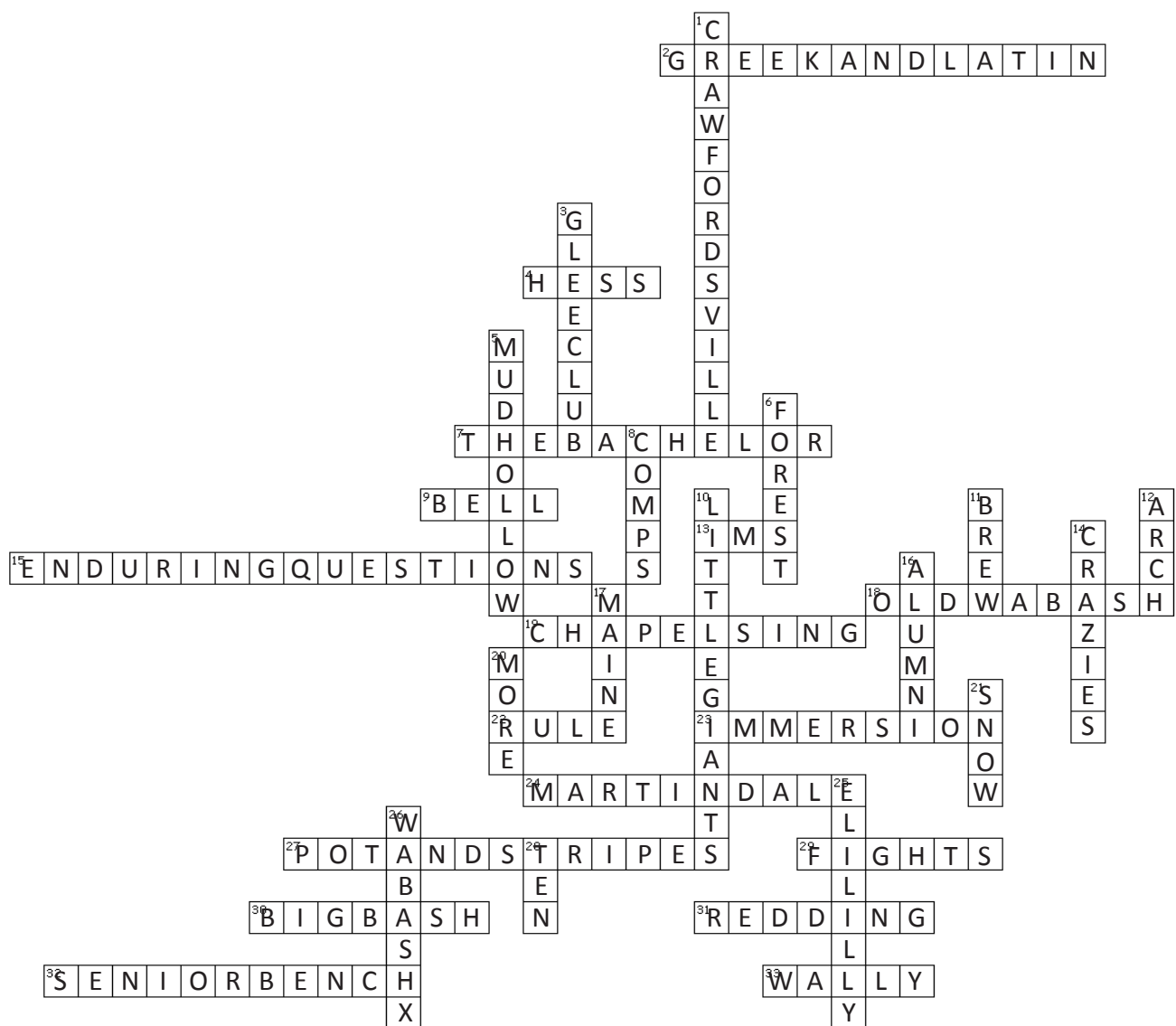


WORD BANK: THE CHORUS OF "OLD WABASH"

AND	EVER	HALLS	LOYAL	OLD	SCARLET	SWEETEST	WABASH
BEAR	FLAG	HEARTS	MEM'RIES	OUR	SHALL	THE	WE
CLASSIC	FLASH	LONG	O'ER	PRAISES	SING	THEE	WE'LL
DEAR	IN	LOVE	OF	PROUDLY	SONS	THY	



Wabash College



ACROSS

2. Classics
4. Gregory D.
7. Award-winning newspaper
9. Monon and Caleb Mills
13. Anyone can play
15. Long-lasting inquiries
18. "Dear..."
19. Homecoming tradition
22. Wabash only has one of these
23. Travel the world
24. Largest dorm
27. Cookware and solid lines
29. Wabash always
30. Large party
31. Dean of Students
32. Covered with layers of paint
33. Mascot

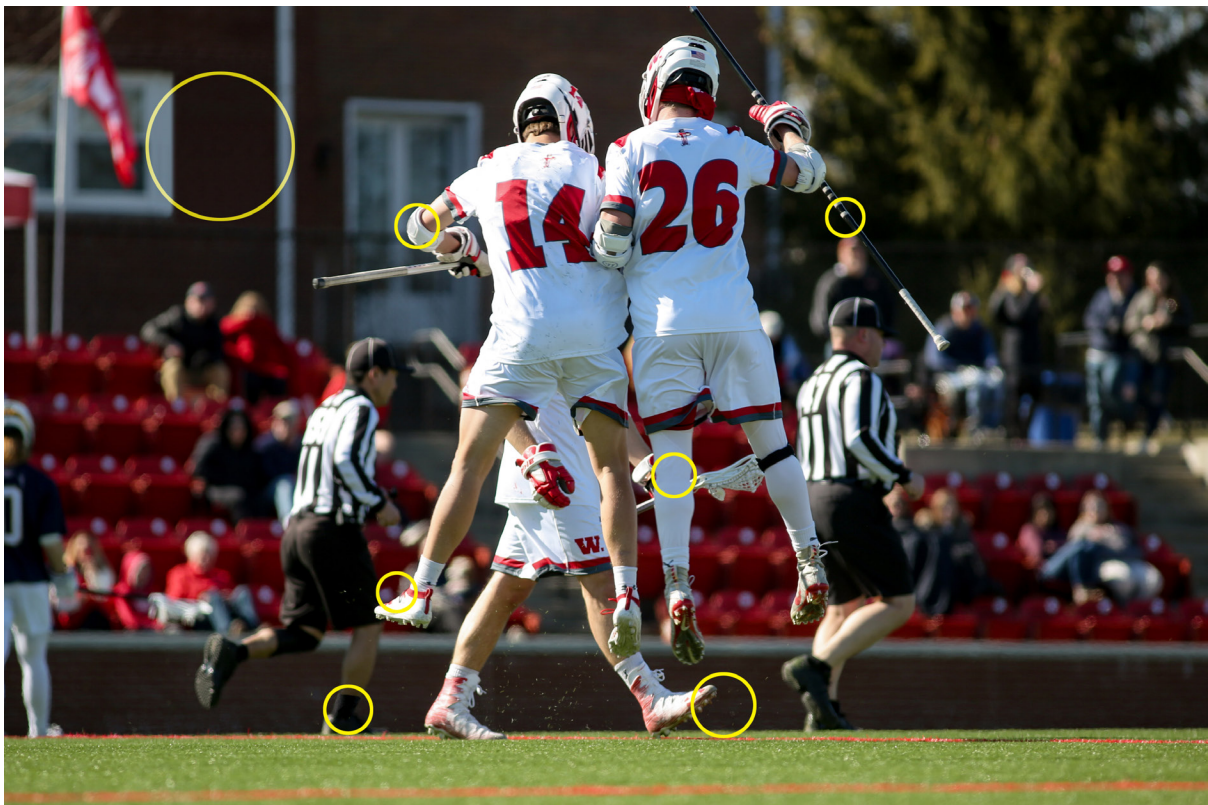
DOWN

1. Our city
3. Blue blazers and red ties
5. Married housing
6. First campus building
8. All-encompassing test
10. Small Goliaths
11. 1832
12. Don't walk under it
14. Chadwick
16. They're No. 1
17. Where the hills are
20. Learn, Earn, Play, Lead
21. Nine men knelt in this
25. He looks out Lilly Library
26. WDPD is part of this
28. Number of fraternities



Wabash Spot the Differences

Answer Key



Wabash Spot the Differences

Answer Key



Wabash Abbreviated

How many of these Wabash College related acronyms and initialisms do you know?

1. WABASH Day: **W**abash **A**lumni **B**enefiting **A**nd **S**erving **H**umanity Day is the NAWM's annual, national weekend of community service. Projects are held from C'ville to D.C. to San Francisco and Dallas.

2. NAWM: The **N**ational **A**ssociation of **W**abash **M**en includes all alumni of the College and others who have been accepted for membership by the Board of Directors of the NAWM. How great are our alumni? They are ranked the number one alumni network in the country.

3. EQ: All students take the course, **E**nduring **Q**uestions. Questions are the springboard for a liberal arts mind. Students explore the fundamental questions of humanity from many perspectives. EQ replaced the sophomore course, Cultures and Traditions (C&T). C&T was preceded by Contemporary Civilization (CC) decades ago.

4. APO: **A**lpha **P**hi **O**mega is a student organization focused on service in and around the Wabash community. One of the other popular service organizations is College Mentors for Kids (CMFK).

5. WAF: **W**abash **A**lways **F**ights is our way of life. It means gutting out the win on the field or in the classroom, taking on challenge, and not giving up. It's also about standing beside and helping your Wabash brothers do the same.

6. WNDY: **W**NDY (90.3 FM) is a collaboration with WFYI Public Radio. A portion of WNDY's lineup is reserved for Wabash football and basketball games and student-produced programming.

7. FAFSA®: **F**ree **A**pplication for **F**ederal **S**tudent **A**id is the form to apply for financial aid for college or graduate school. Students must submit a new FAFSA each year they wish to be considered for financial aid.

8. GHI: The **G**lobal **H**Health **I**nitiative, one of the WabashX co-curricular programs, puts coursework into practice. Understanding the complex issues of public health in our communities requires a multidisciplinary approach. GHI provides curricular and experiential opportunities to transform the way we think about health.

9. CIBE: Another of the WabashX co-curricular programs, the **C**enter for **I**nnovation, **B**usiness & **E**ntrepreneurship program teaches entrepreneurial and business skills and provides tools for students to be innovative business leaders.

10. WDPD: In the **W**abash **D**emocracy & **P**ublic **D**iscourse Wabash X initiative students learn to participate in and lead deliberation, discussion, debate, and advocacy.

11. IFC and IMA: The **I**nter**F**raternity **C**ouncil encourages cooperation and unity between fraternities, and the **I**ndependent **M**en's **A**ssociation provides opportunities, and events for independent men on campus.

12. UPS: The student organization **U**nidos **P**or **S**angre promotes Hispanic/Latino community and culture. Other student organizations that promote culture and community include the International Student Association (ISA), the Muslim Student Association (MSA), the Vietnamese Student Association (VSA), African Students Association, Spanish Club, French Club, German Club, Arabic Club, and Chinese Club.

13. FAC: The **F**ine **A**rts **C**enter is home to the art, music, theater, and rhetoric departments. It has exhibition galleries and studios for painting, ceramics, and photography. Also included is the 375-seat Ball Theater and 125-seat Experimental Theater, the 275-seat Salter Concert Hall, 110-seat Korb Classroom, and numerous seminar and practice rooms. Ball Theater and Salter Concert Hall are used for student performances, as well as productions by visiting artists.

14. NCAC: Wabash belongs to the **N**orth **C**oast **A**thletic **C**onference. Consisting of 10 academically selective colleges and universities the NCAC believes that high-level athletic programs and rigorous academic standards can go hand-in-hand.

15. MXIBS: The **M**alcolm **X** Institute of **B**lack **S**tudies provides cultural, educational, and social programs designed to help its members develop leadership skills. Founded in the 1970-71 school year, the MXI's membership and leadership are open to all Wabash students.

16. IT: **I**nformation **T**echnology Services supports all technology on campus including, network infrastructure, computer labs and classrooms, web technologies, and research computing.

17. IRB: The **I**nstitutional **R**eview **B**oard is the responsible for reviewing and approving all proposed research involving human subjects conducted at Wabash by faculty, students, staff, or anyone using Wabash students, personnel, facilities or data.

18. LOL: Like to play **L**eanne of **L**egends? This is the student organization for you. Have another special interest like BBQ, chess, cars, films, social dance, or 3D printing? You can also start your own special interest club.



Wabash Abbreviated

How many of these Wabash College related acronyms and initialisms do you know?

19. PIE: Not just a delicious dessert. At Wabash our week-long **P**rofessional **I**mmersion **E**xperiences include organizational site visits, networking opportunities, and on-the-ground experience in a new place. Currently PIE includes New York, San Francisco, Chicago, Denver, and Indianapolis.

20. TALL: This acronym is a quick way to remember our mission: **T**hink Critically, **A**ct Responsibly, **L**ead Effectively, and **L**ive Humanely.

21. QSC: The **Q**uantitative **S**kills **C**enter offers one-on-one peer tutoring for biology, chemistry, economics, mathematics, and physics.

22. ENS: The College's **E**mergency **N**otification **S**ystem is used to distribute severe weather and emergency communication alerts to campus via text and email.

23. AMPED: **A**thletes **M**aking **P**lays **E**very **D**ay provides athletes with opportunities to fellowship and hear Christian messages. Other student organizations with an emphasis on religious faith include the Newman Catholic Center and Wabash Christian Men (WCM).

24. WAR Council: **W**abash **A**cts **R**esponsibly is a student organization promoting responsible health behaviors. Similarly, the Public Health Organization (PHO) and the Mental Health Concerns Committee (MHCC) are engaged in encouraging overall student wellness.

25. PPE: In one of our newest majors, **P**hilosophy, **P**olitics and **E**conomics, students learn to investigate the social phenomena that philosophy, political science, and economics address from different perspectives.

26. SAAC: The **S**tudent **A**thletic **A**dvisory **C**ouncil is a student organization that promotes athletic events at Wabash to help bring out community support, involvement, and engagement. Other student organizations dedicated to athletics and physical activity include the Fly Fishing Club, Cycling Club, Climbing Club, Barbell Club, Skate Club, the Extreme Sports Club, Rugby Club, Spikeball Club, and Ultimate Frisbee Club.

27. WISE: **W**abash **I**nternships and **S**tudent **E**mployment and Federal Work Study (FWS) are part-time on-campus work opportunities for students as part of their financial aid package.

28. FERPA: The **F**amily **E**ducational **R**ights and **P**rivacy **A**ct is a Federal law that protects the privacy of student education records. FERPA rights transfer from parents to students when they reach age 18 or attends a school beyond the high school level.

29. PBK: **P**hi **B**eta **K**appa is America's most prestigious honor society that celebrates excellence in the liberal arts and sciences. Members are chosen from 290 top schools across the nation through a highly selective, merit-based invitation process.

30. MOWNBU: **M**en of **W**abash **N**othing **B**reaks **U**s is commonly heard among the Track and Field athletes. Create by Coach Clyde Morgan, "It's about never allowing life's adversities to break you. Never shy away from adversity; you know at some point it's coming. Put your chin down and break through it. It's about your mindset. Nothing will ever break you, it may bend you, but never break you."

31. ULEQ: **U**nlocking **L**eadership through **E**mootional Intelligence (**Q**uotient) is a week dedicated to increase skills in teambuilding, interpersonal dynamics, and management.

32. ACE: Wabash offers a wide range of support services for students through the **A**cademic **C**enters of **E**xcellence, including the Writing Center, the Quantitative Skills Center (QSC), and the Office of Student Enrichment (OSE).

33. WM: **W**abash **M**agazine is the Journal of Wabash College.

34. BIP: The seven-week **B**usiness **I**nnovation **P**rogram is an immersion into business and entrepreneurship, including financial literacy, strategic planning, marketing, decision making, leadership, human resources, and negotiations. Our one-week intensives at Wabash include the Sales Immersion Program (SIP) and the Marketing Immersion Program (MIP).

35. ETC: The **E**ducational **T**echnology **C**enter is dedicated to supporting teaching and learning at Wabash College by assisting with the instructional design and educational technology needs of the faculty, staff, and students.

36. SBIF: The purpose of the **S**mall **B**usiness **I**nternship **F**und is to provide students with internship opportunities with alumni in a small business or entrepreneurial setting.



Wabash Word Jumble

Answer Key

- | | |
|--------------------------|----------------------|
| 1. CENTER HALL | 21. BROTHERHOOD |
| 2. WABASH. | 22. THINK CRITICALLY |
| 3. SCARLET | 23. ARBORETUM |
| 4. LITTLE GIANTS | 24. RINGING IN |
| 5. PIONEER CHAPEL | 25. SCHOLARSHIP |
| 6. IMMERSION LEARNING | 26. SPHINX CLUB |
| 7. PHILANTHROPY | 27. ALUMNI NETWORK |
| 8. MAJOR | 28. TOP RANKED |
| 9. WALLY | 29. VOCATION |
| 10. SENIOR BENCH | 30. ACT RESPONSIBLY |
| 11. LIVE HUMANELY | 31. CHAPEL TALK |
| 12. RHYNIE BURGER | 32. COMMENCEMENT |
| 13. OLD WABASH | 33. MILLIGAN CLOCK |
| 14. WABASH ALWAYS FIGHTS | 34. THE ARCH |
| 15. FELLOWSHIPS | 35. MONON BELL |
| 16. CAREER SERVICES | 36. 1832 BREW |
| 17. FRATERNITY | 37. CALEB MILLS |
| 18. LEAD EFFECTIVELY | 38. STUDENT LIFE |
| 19. CHAMPION | 39. THE BACHELOR |
| 20. WABASHX | 40. CRAWFORDSVILLE |

