

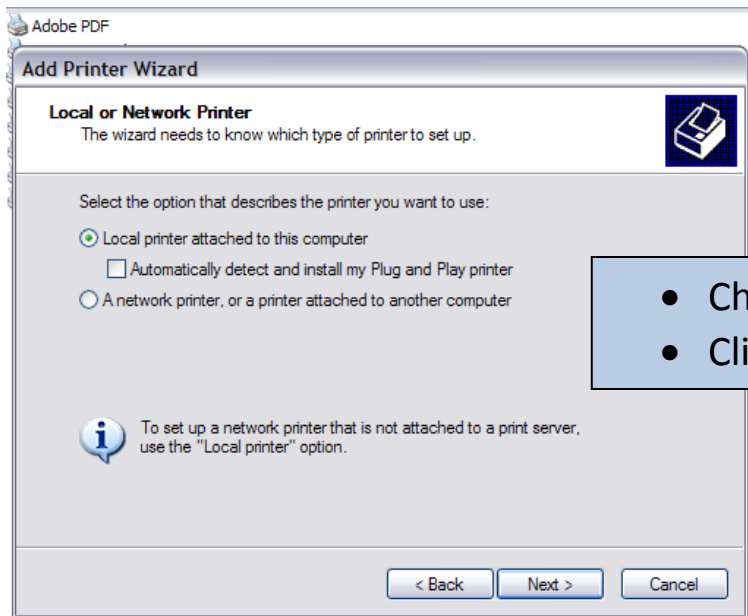
Printer Set-up (Windows)

Start > Settings > Printers and Faxes

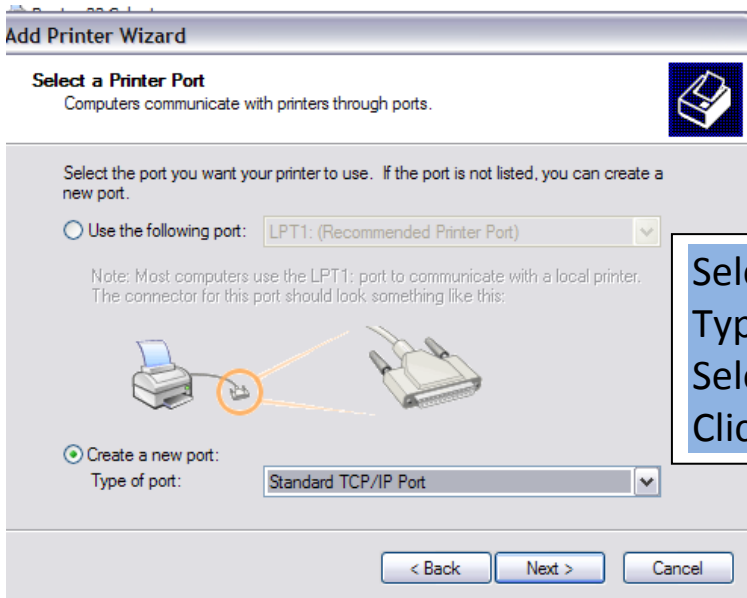
- Add a Printer

The Printer Wizard dialog box will appear

- Click "Next"
- This Dialog box will appear:



- Choose: Local Printer
- Click "Next"



- Select "Create a new port:"
- Type of port:
- Select "Standard TCP/IP Port"
- Click "Next"

Another Dialog Box will appear.

Click "Next"

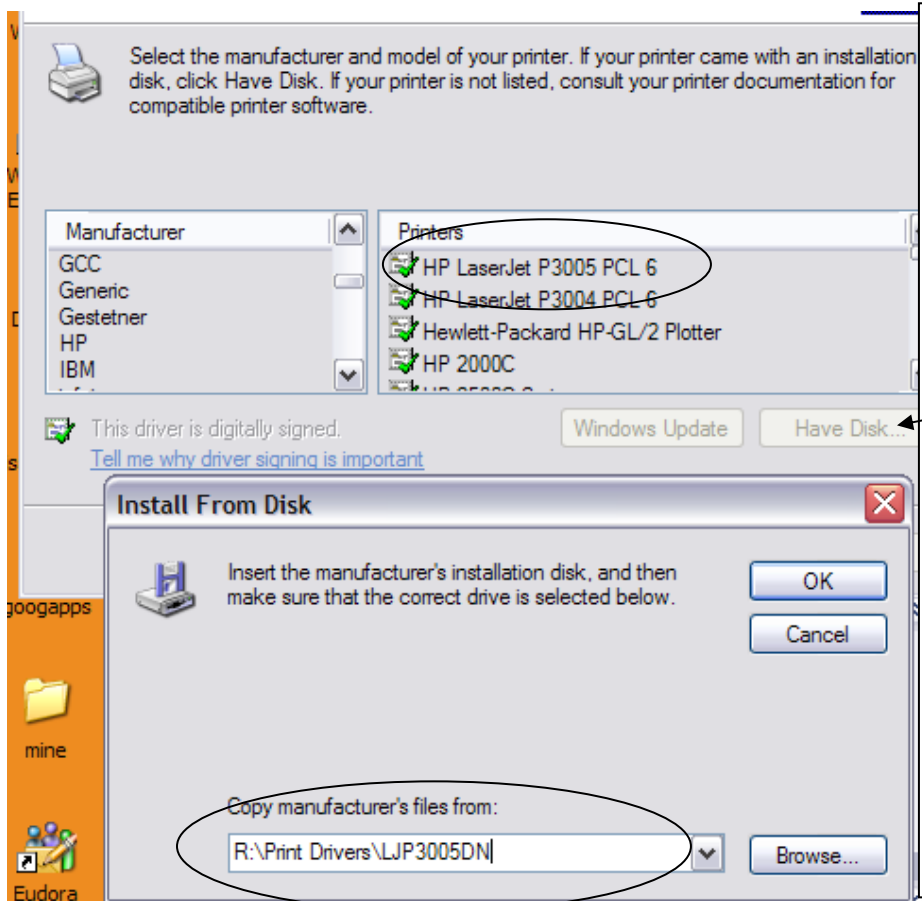
IP Port Dialog box will appear:

- Enter the IP Address (someone in your house should have this information).
- Click "Next"

Another dialog box will appear.

Click “Finish”

*From here, you will be directed to install the printer software.



- If the printer does not appear in the list and you are connected to the Wabash Network, you may:

- Click “Have Disk”
- Click “Browse”
- Go to the R: drive (Public on Caleb)
- Select “Print Drivers”
- Select “LJP3005DN”
- Click “Open”
- Click “OK”

Click “Next”

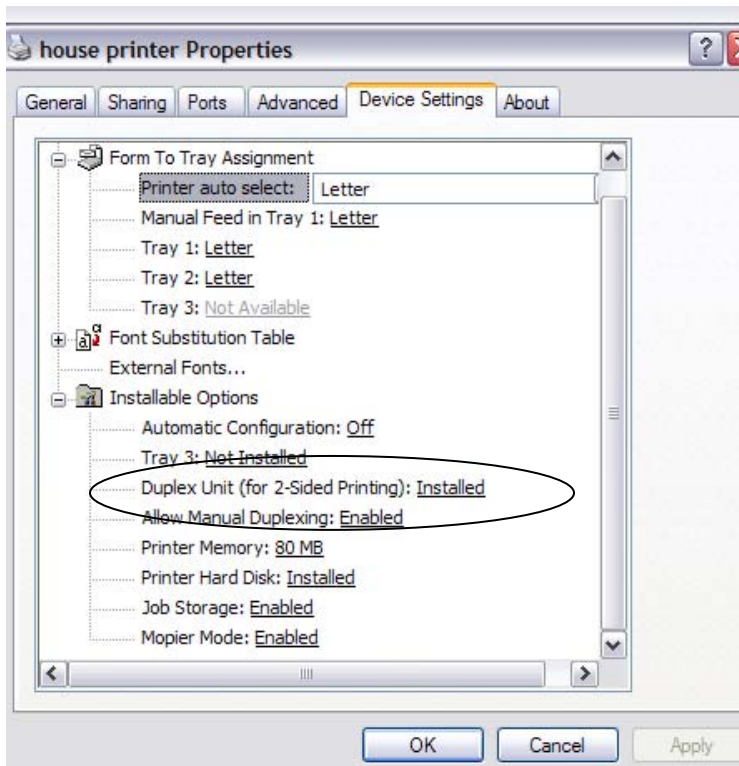
- Printer Name: (ex: house printer)
- Default, or not; your choice.
- Click “Next”

- Confirmation of the choices you made when installing your printer: Name, Port, Model, Default, Test Page
- Click “Finish” and the drivers will load. This may take a few minutes.

You will be asked if you would like to print a test page.

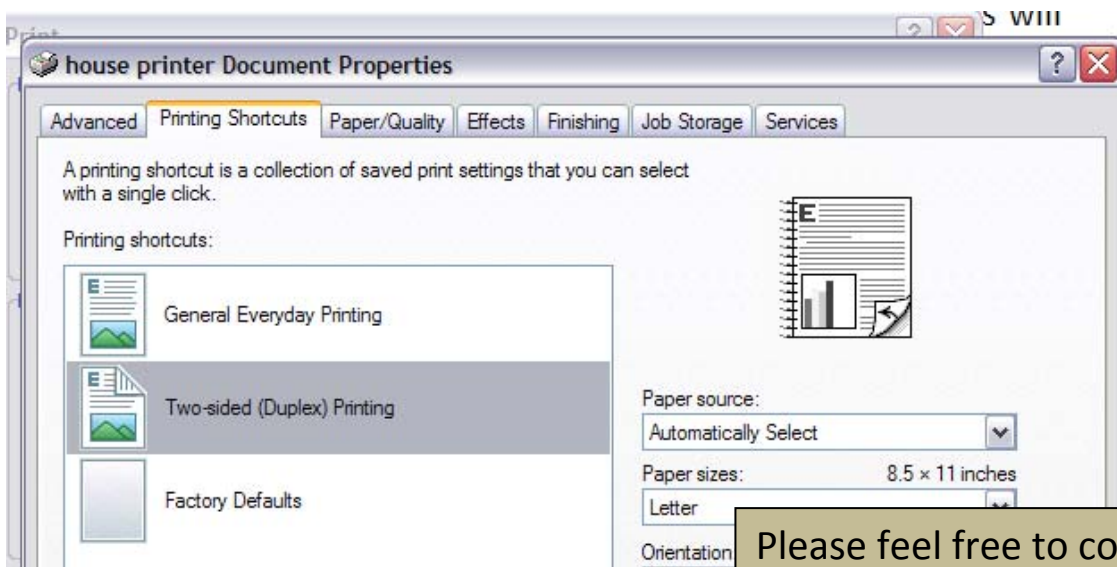
Side note: You may download the driver from the HP site: [Link to download drivers](#)

Duplex Printing: (Your printer installs with the Duplex feature!)



SAVE PAPER!!!!

When you go to print your paper (Ctrl+P), Click on Properties > “Printing Shortcuts” tab > Select “Two-sided Duplex Printing” > OK



Please feel free to contact the Help Desk if you have any questions.
Email: helpdesk@wabash.edu
Phone: (765) 361-6400