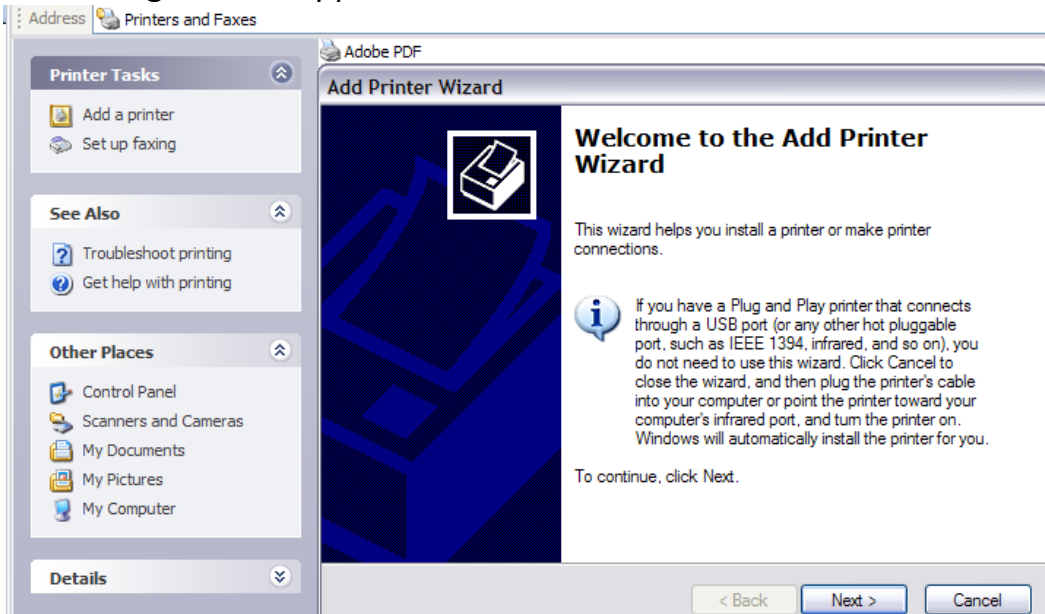


Printer Set-up (Windows)

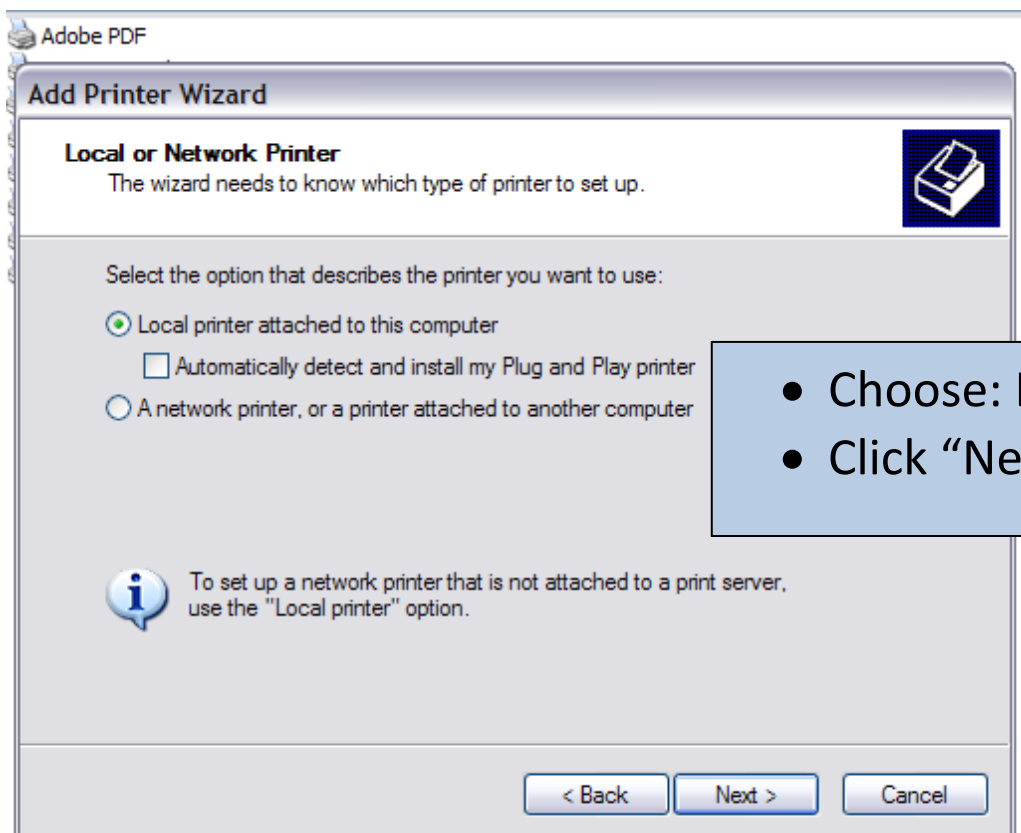
Start > Settings > Printers and Faxes

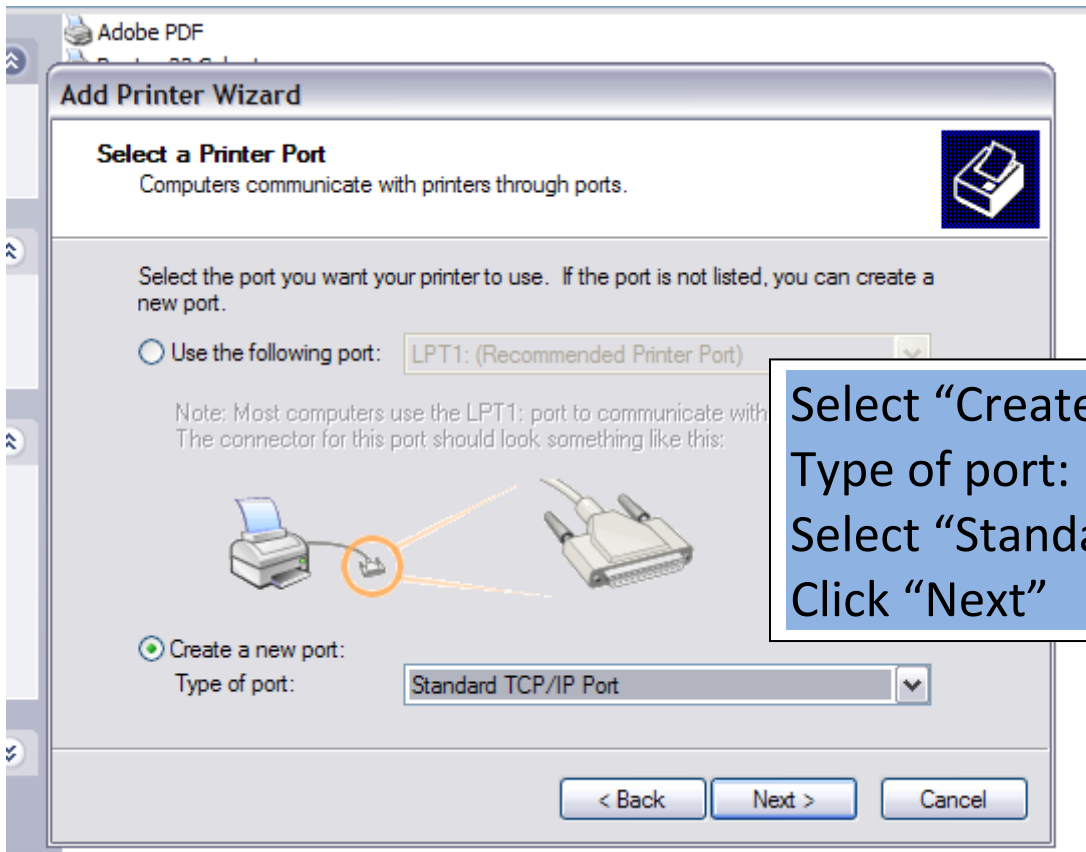
- Add a Printer

This Dialog box will appear:

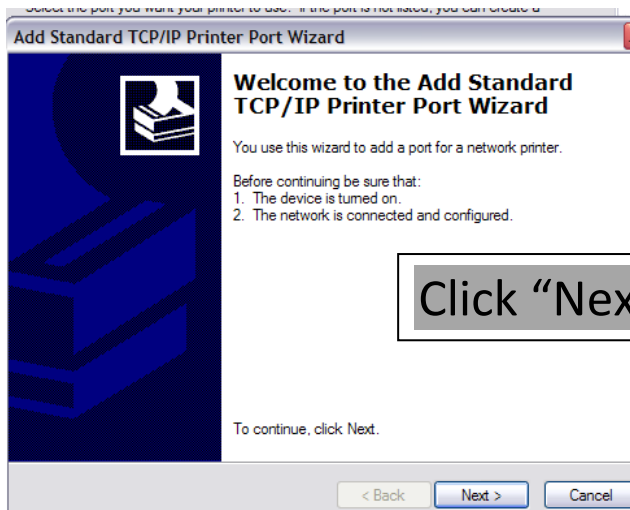


- Click "Next"
- This Dialog box will appear:

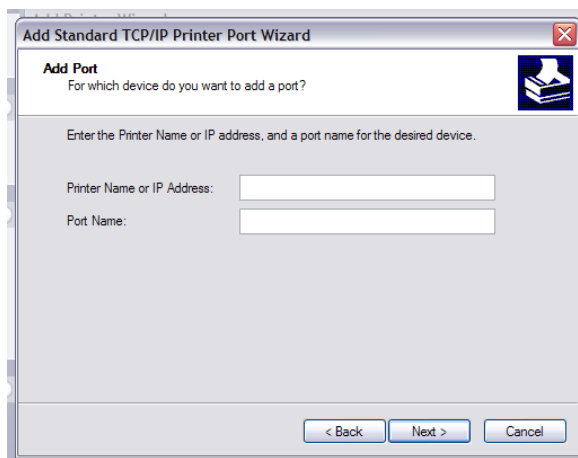




Select "Create a new port:"
Type of port:
Select "Standard TCP/IP Port"
Click "Next"

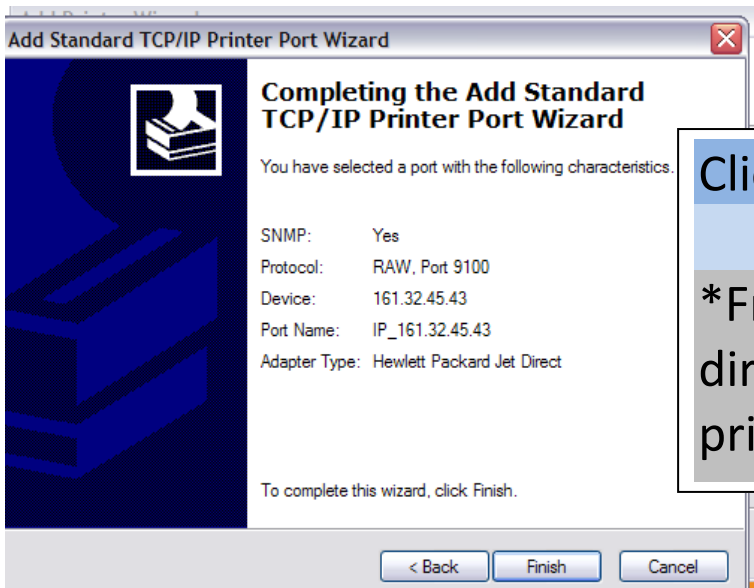


Click "Next" again



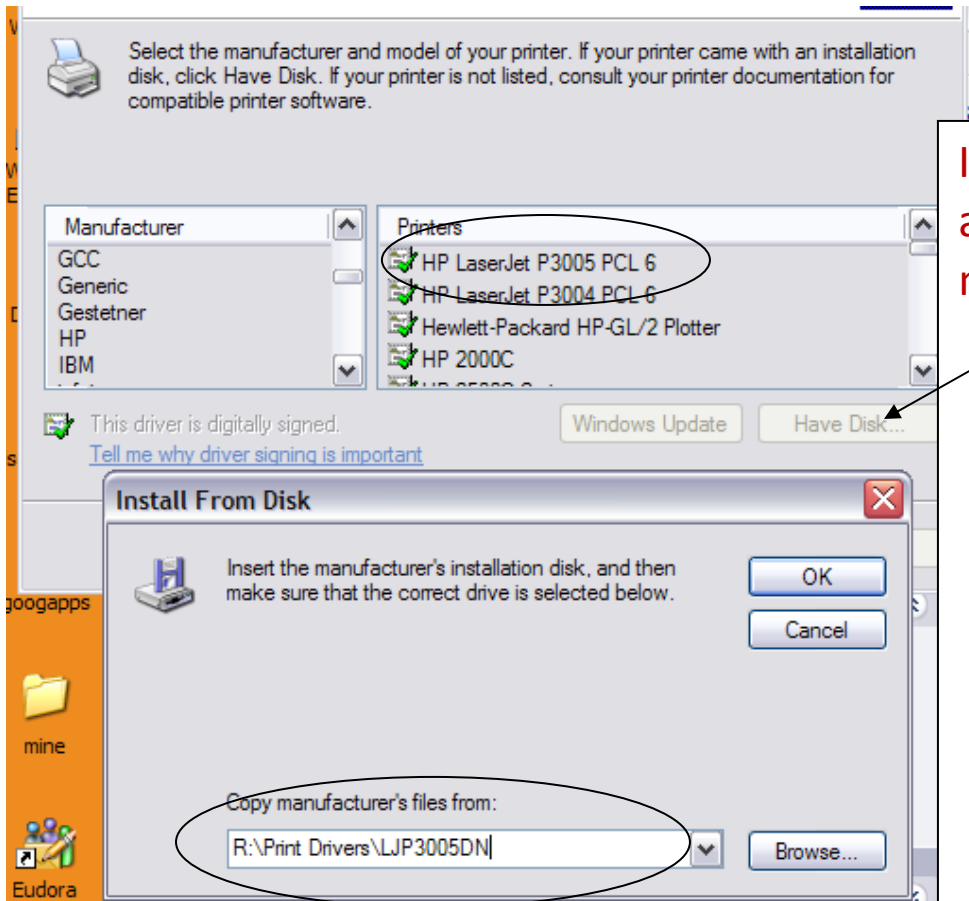
Enter the IP Address
(someone in your house should have this information).
Click "Next"

IP Port Dialog box:



Click "Finish"

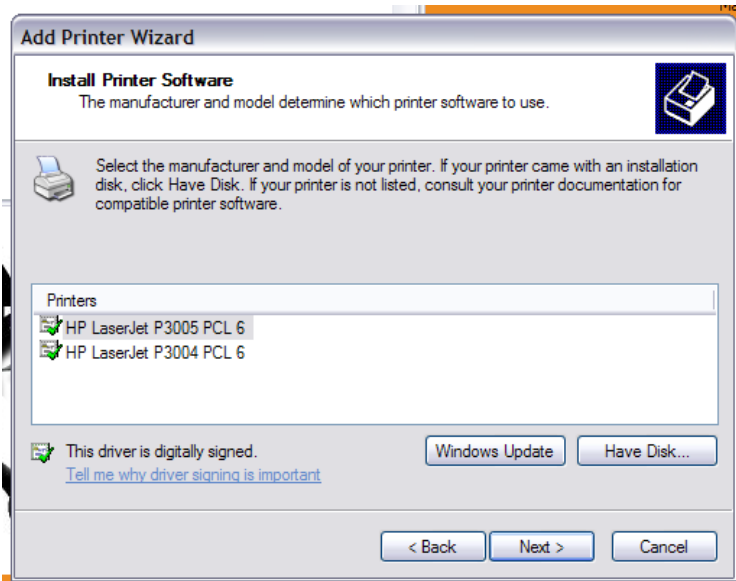
*From here, you will be directed to install the printer software.



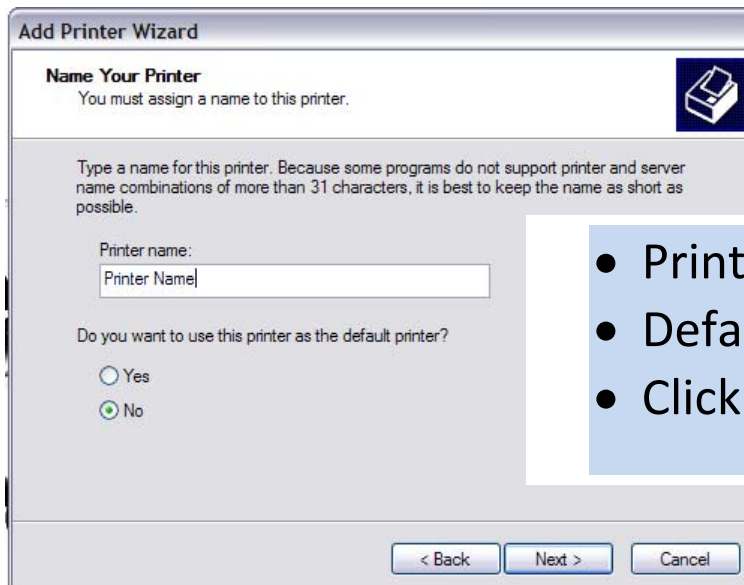
If the printer does not appear in the list, you may

- Click "Have Disk"
- Click "Browse"
- Go to the R: drive (Public on Caleb)
- Select "Print Drivers"
- Select "LJP3005DN"
- Click "Open"
- Click "OK"

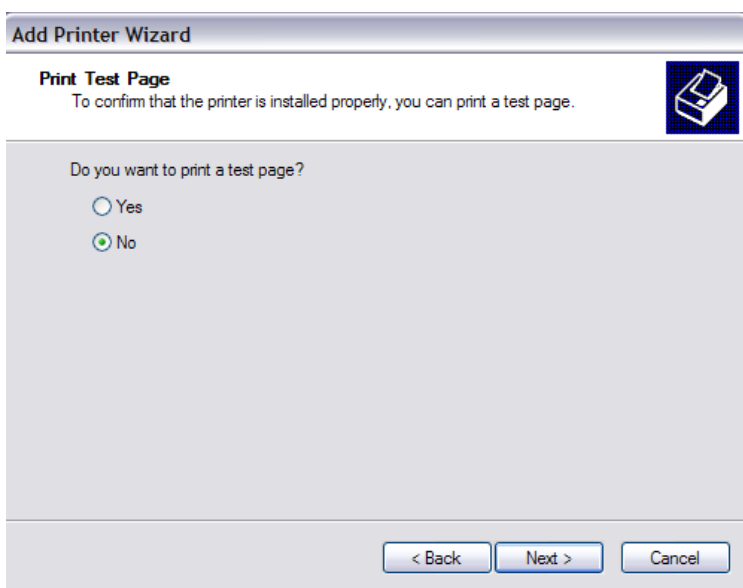
Side note: You may download the driver from the HP site:
[Link to download drivers](#)



Click "Next"

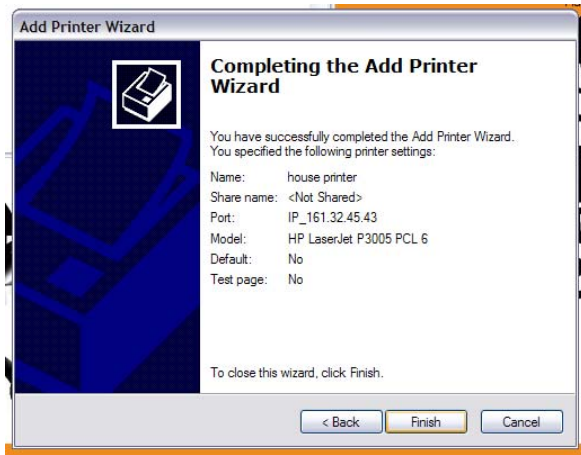


- Printer Name: (ex: house printer)
- Default, or not; your choice.
- Click "Next"



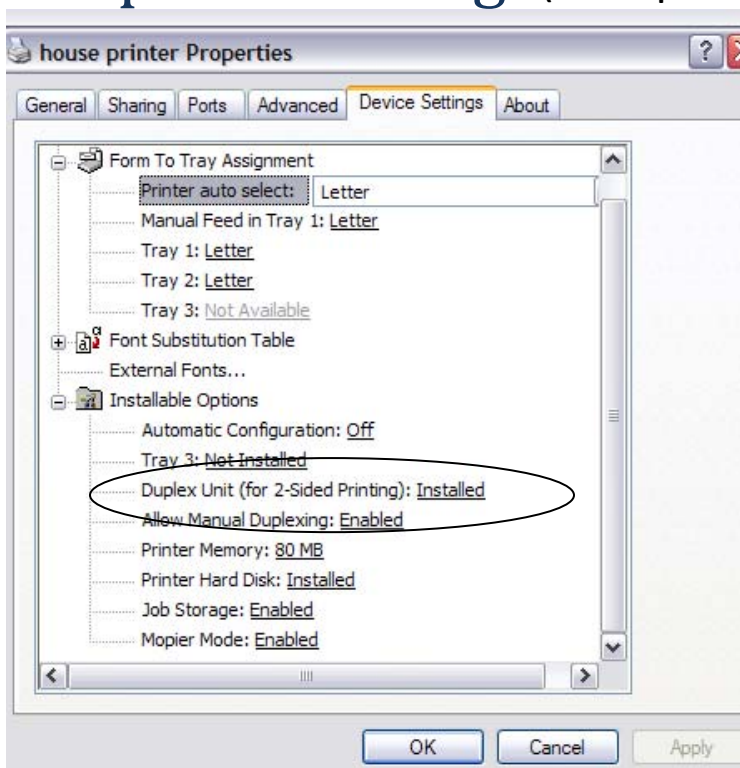
Print a test page

option..."Next"



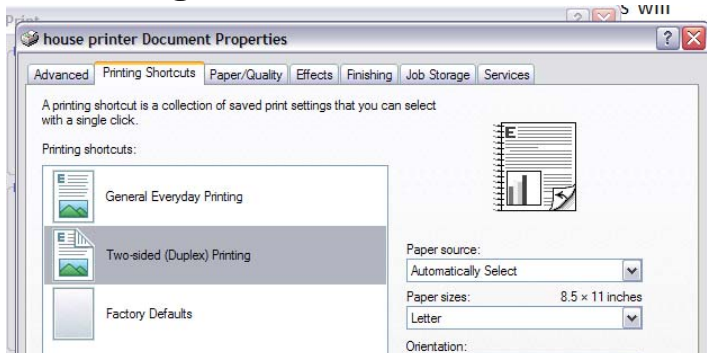
- Confirmation of the choices you made when installing your printer: Name, Port, Model, Default, Test Page
- Click “Finish” and the drivers will load. This may take a few moments.

*Duplex Printing: (Your printer installs with the Duplex feature!)



SAVE PAPER!!!!

When you go to print your paper (Ctrl+P), Click on Properties > “Printing Shortcuts” tab > Two-sided Duplex Printing > OK



Please feel free to contact the Help Desk if you have any questions.
 Email: helpdesk@wabash.edu
 Phone: (765) 361-6400