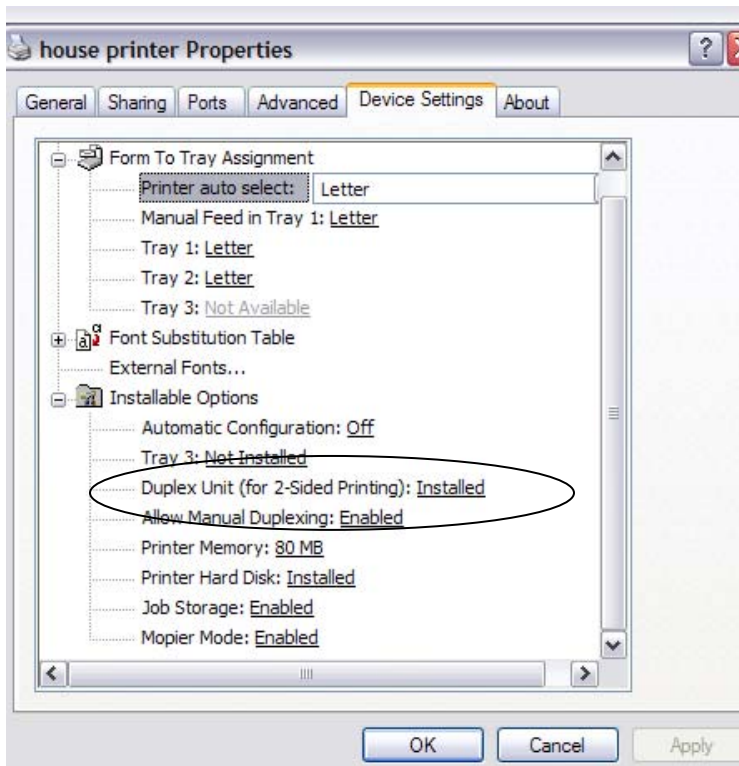
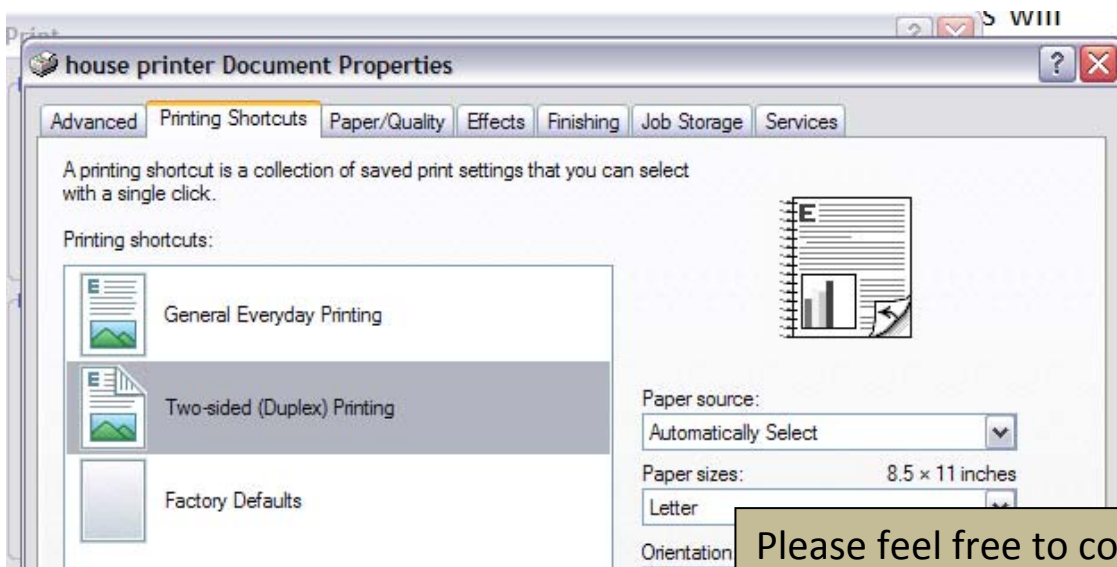


# Duplex Printing: (Your printer installs with the Duplex feature!)



SAVE PAPER!!!!

When you go to print your paper (Ctrl+P), Click on Properties > “Printing Shortcuts” tab > Select “Two-sided Duplex Printing” > OK



Please feel free to contact the Help Desk if you have any questions.  
Email: [helpdesk@wabash.edu](mailto:helpdesk@wabash.edu)  
Phone: (765) 361-6400