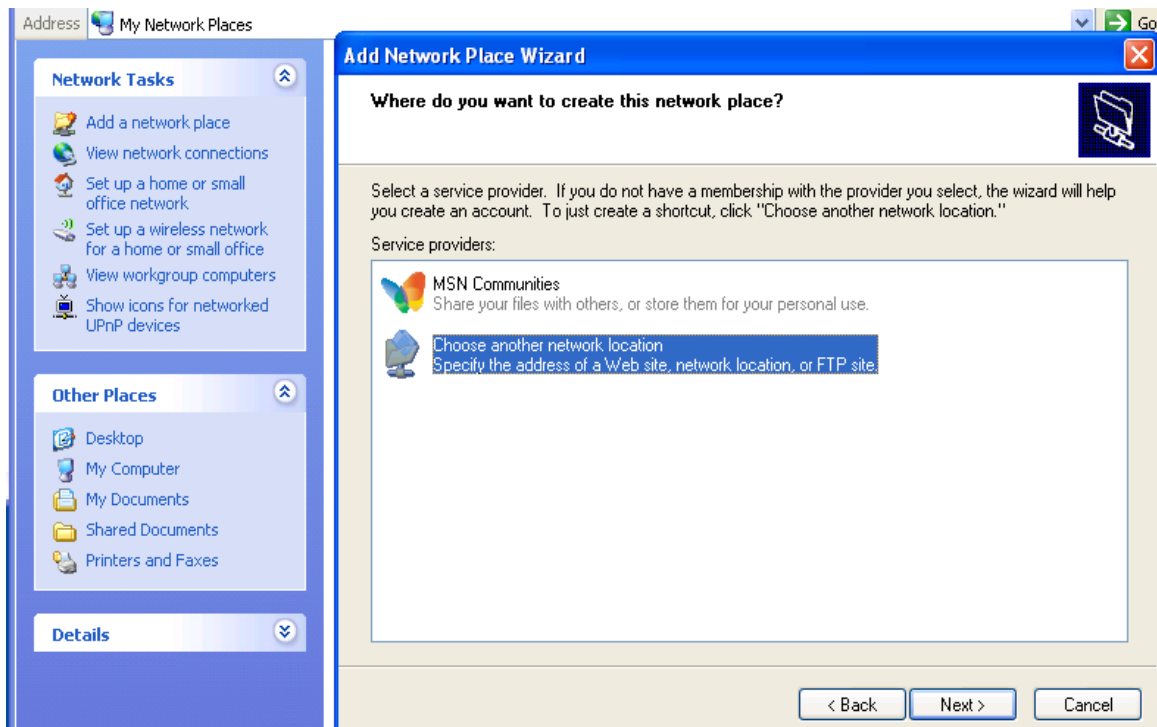


Windows XP to access files on the Network

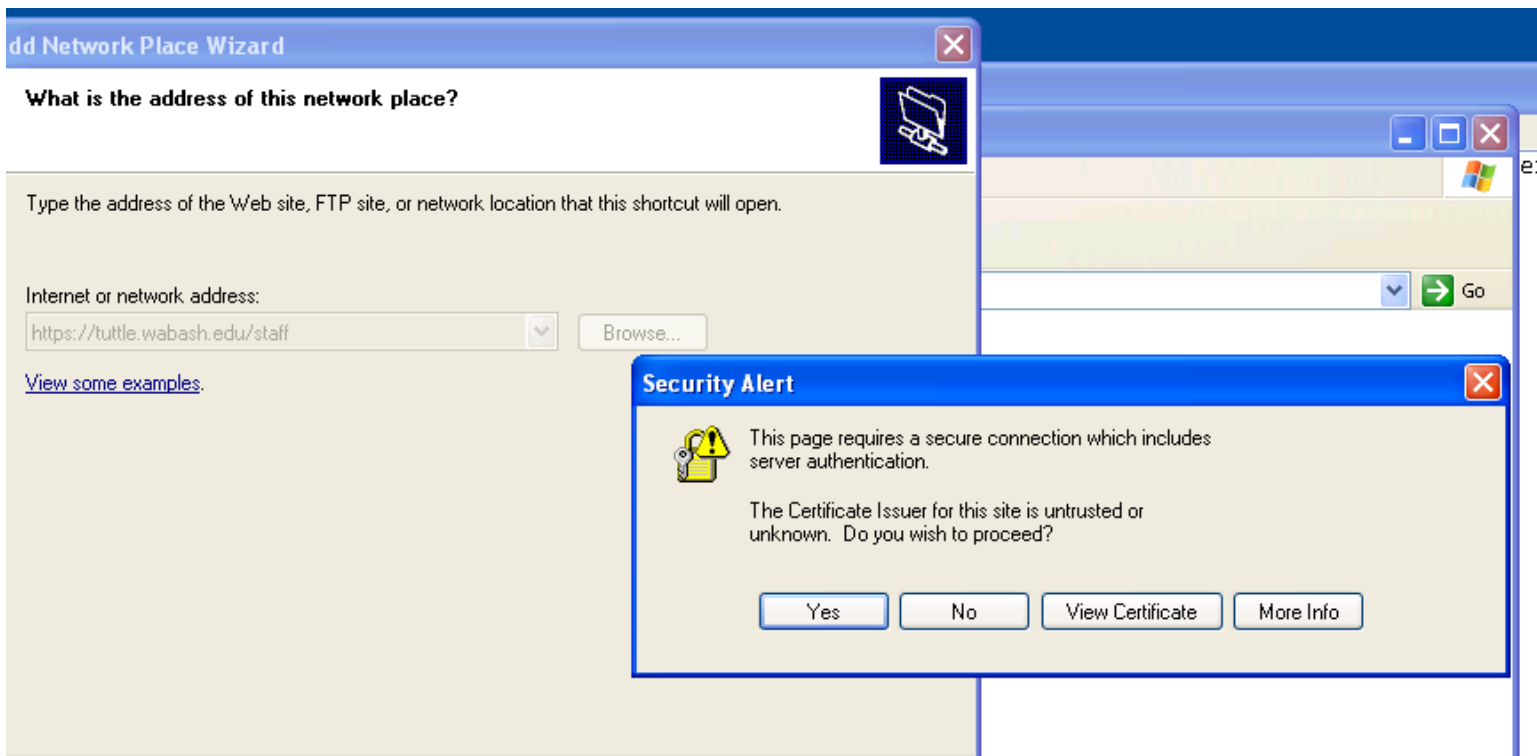
Start > My Computer > My Network Places > Add a Network Place > Next > Choose another network location > Next



Enter <https://tuttle.wabash.edu/staff>

Click Next

If you receive a Certificate error (or 2), click **Yes**.



Note: User name is: **WABASH\username**

What is the address of this network place?



Type the address of the Web site, FTP site, or network location that this shortcut will open.

Internet or network address:

[View some examples.](#)

Enter Network Password



Please enter your authentication information

Resource: https://tuttle.wabash.edu/staff

User name:

Password:

☐ Save this password in your password list

Click OK. | Then, if you like, you may Name the Network Place and click Next

Add Network Place Wizard



What do you want to name this place?

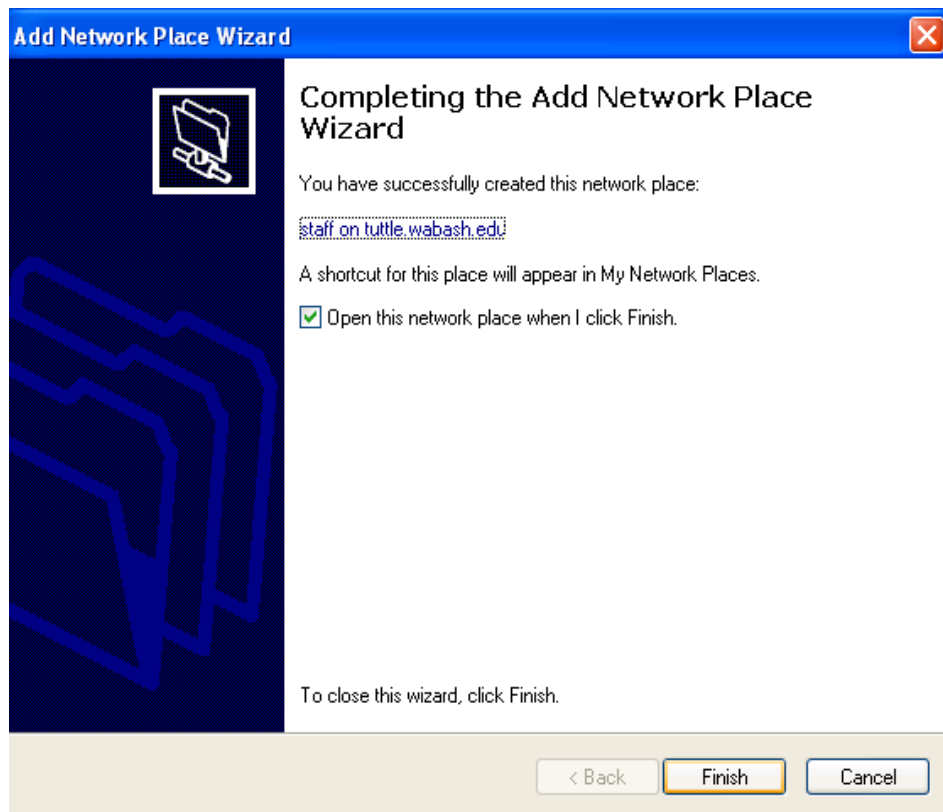


Create a name for this shortcut that will help you easily identify this network place:

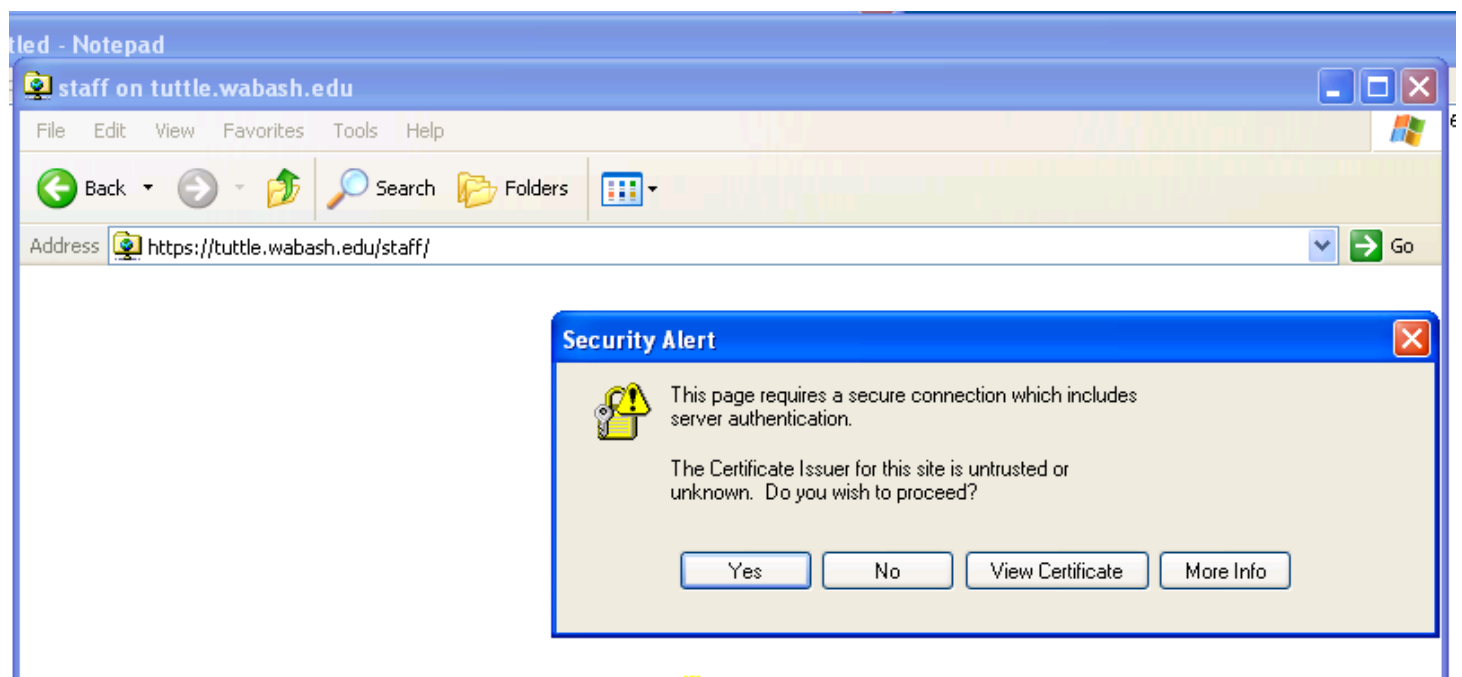
https://tuttle.wabash.edu/staff.

Type a name for this network place:

Click Finish



The first time you map the network place, you may receive additional Windows to accept the Certificate and reenter your username & password. Click Yes.



For User name, remember to enter: WABASH\username

