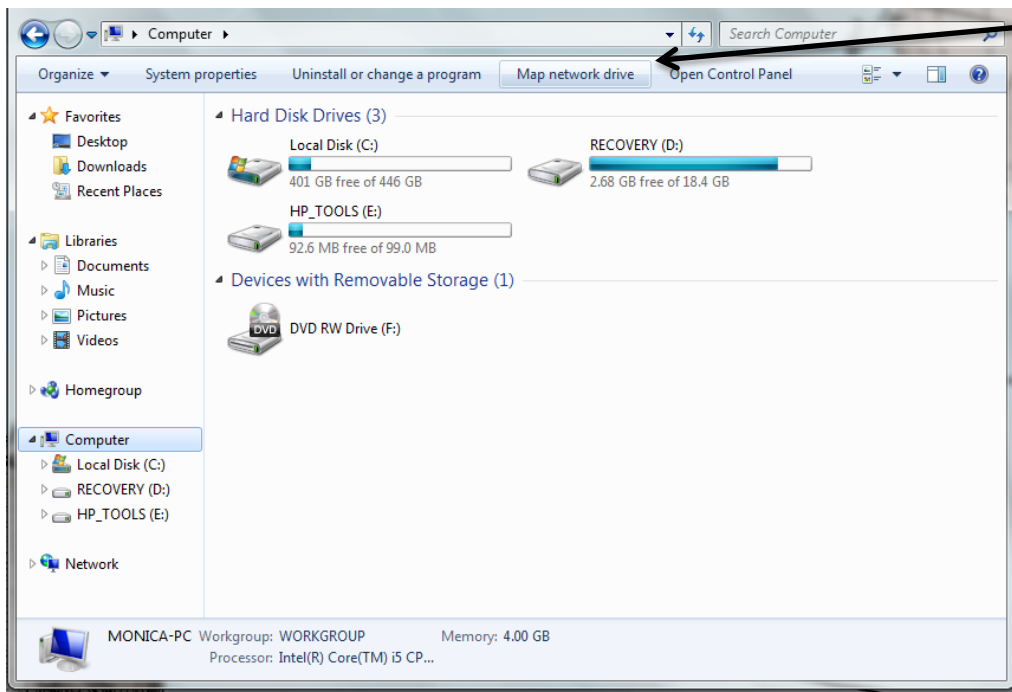


Windows 7 to access files on the Network

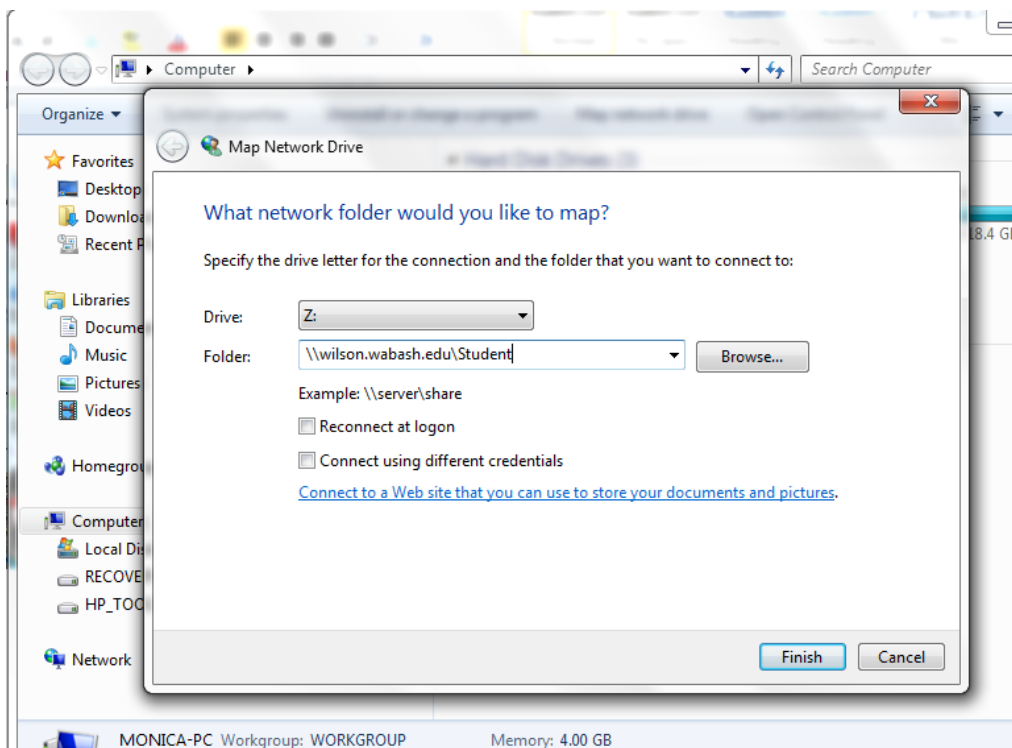
Go to: Computer > "Map Network Drive" tab:

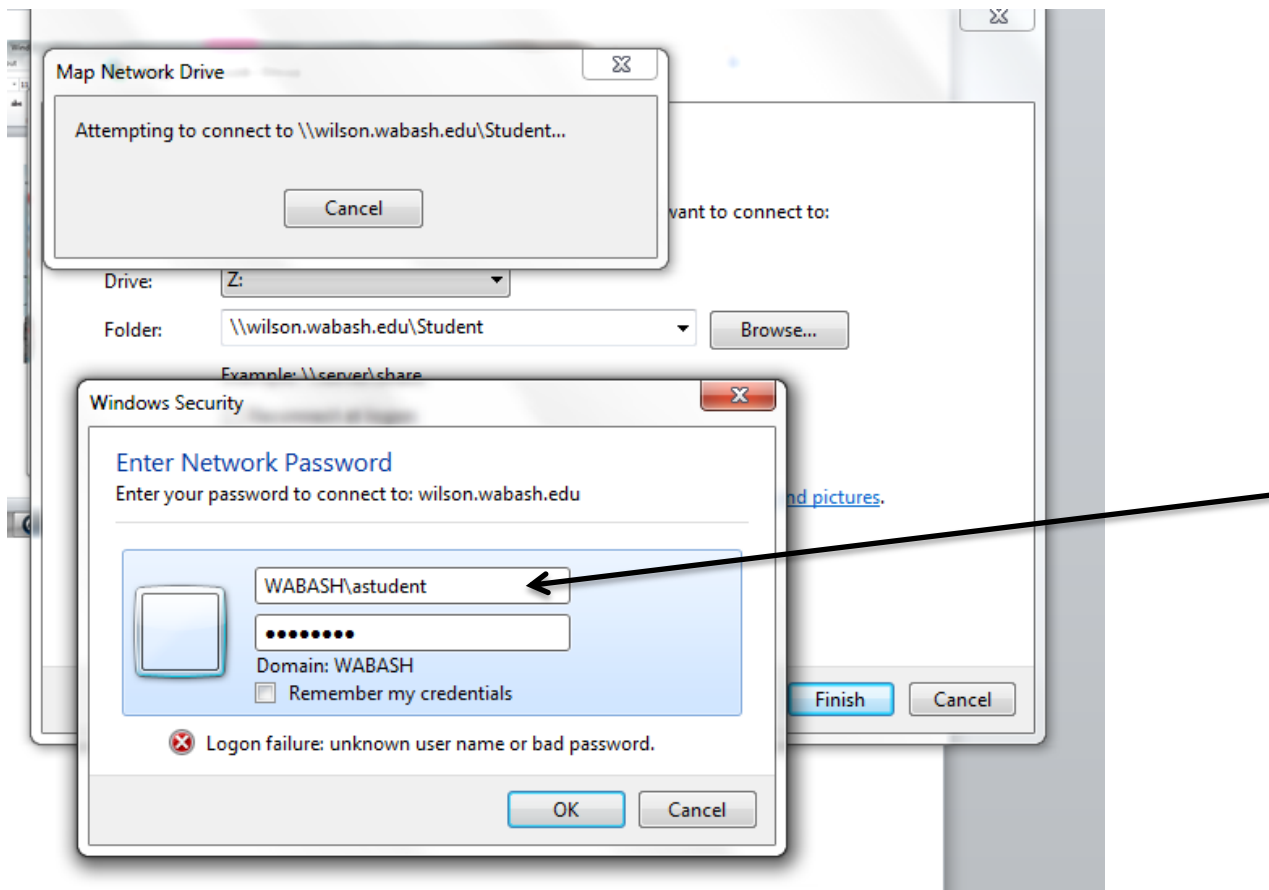


When the new Window appears, you will need to enter the Folder path.

- Faculty and Staff: Folder: `\\tuttle.wabash.edu\Staff`
- Students: Folder: `\\wilson.wabash.edu\Student`

Click **Finish**



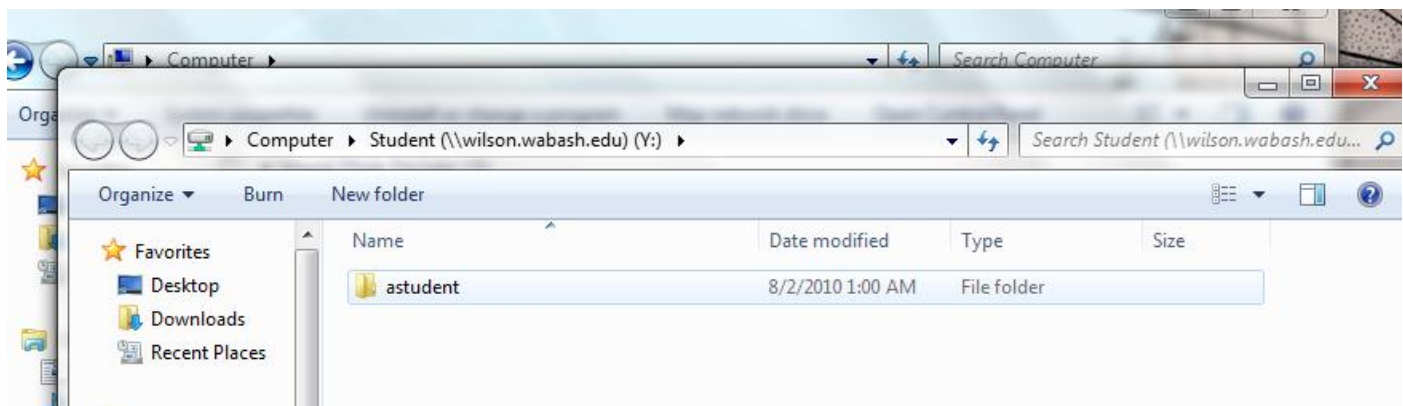


You must enter: **WABASH\username**

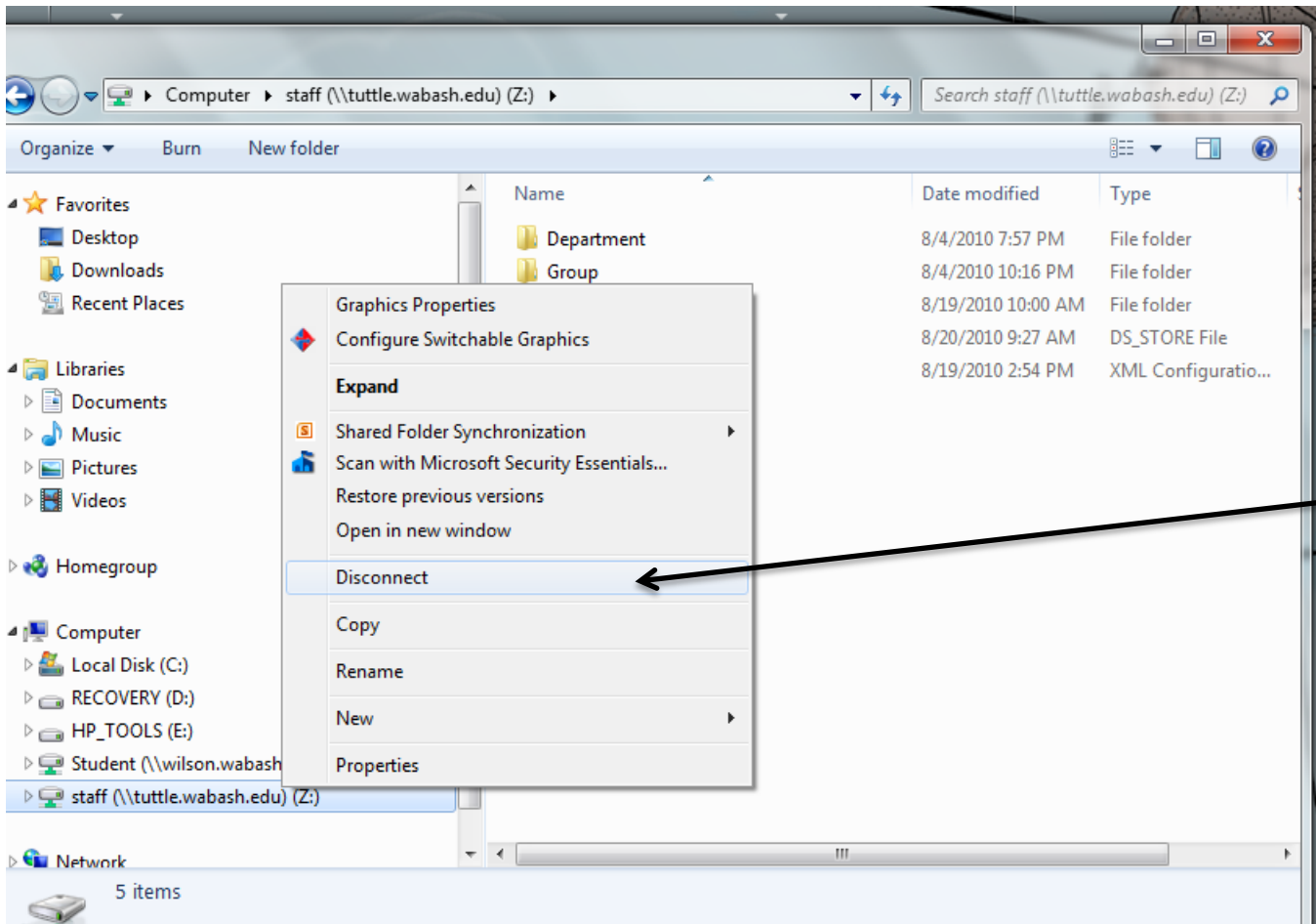
Then enter your Wabash password

Click OK

You will then have access to your files on the Network:



Once you are done, we recommend you right click on the directory and choose to “Disconnect.”



Please contact the Help Desk (helpdesk@wabash.edu) with further questions. Thank you.