
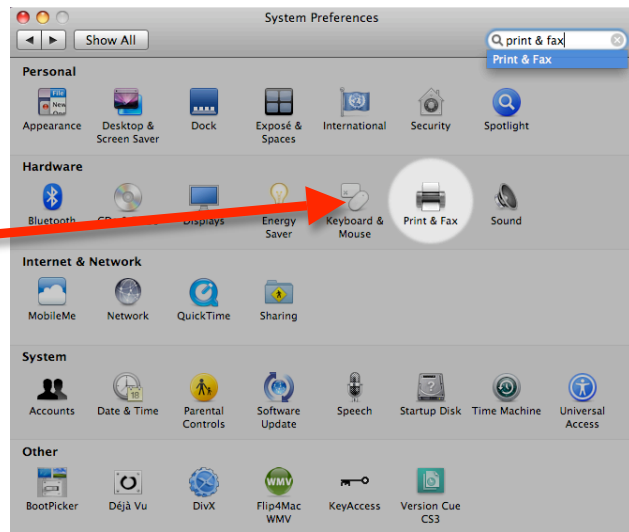
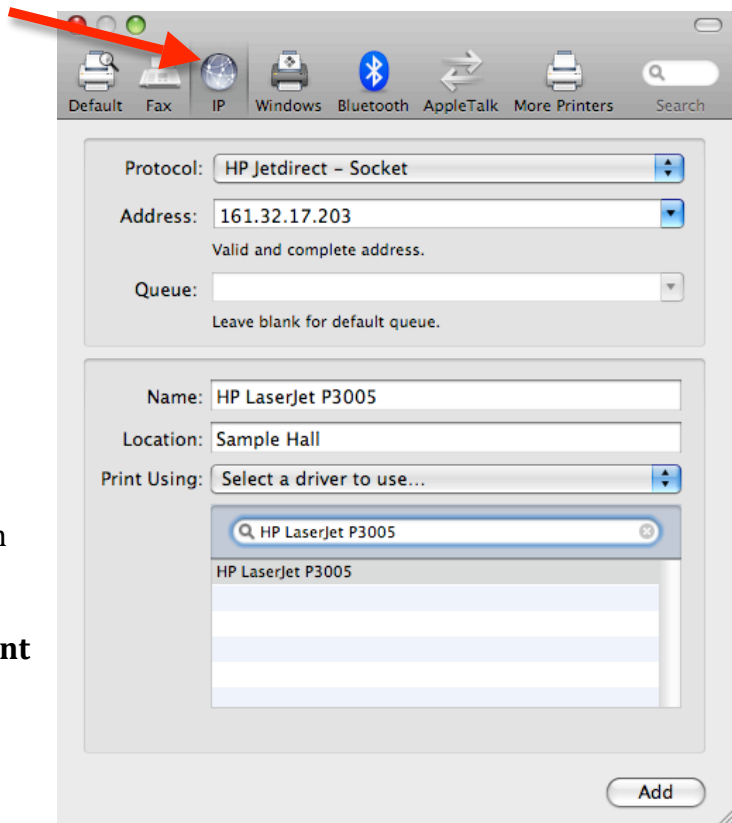


## Connecting to a living unit printer - For Mac 10.4 and 10.5 users

1. Open **System Preferences** (accessible through the Apple menu  or the Applications folder)
2. Click on the icon for **"Print & Fax"**.



3. Under the "Printers" pane on the left side, **click the "+" sign** to add a new printer.
4. **Click the "IP" tab** at the top of the new window that appears.



5. In the **Protocol** drop-down menu, select **HP Jetdirect - Socket**.
6. In the **Address** field, **enter the IP address** you were given. (Format should be similar to 161.32.xx.xxx)
7. Leave the **Queue** field blank.
8. In the **Name** field, type HP LaserJet P3005.
9. In the **Location** field, type the name of the living unit in which the printer is located.
10. If the print driver is not automatically loaded in the **Print Using** drop-down menu, scroll down to HP LaserJet P3005. If you cannot find this selection, you will need to download the driver again from the HP website ([www.hp.com](http://www.hp.com) or click [here](#)) or from the Caleb public server. (afp://caleb.wabash.edu/CALEB.PUBLIC, then follow > Print Drivers > LJ P3005 > For Mac. Drag the .mpkg file to your desktop, then double-click it to start installing.)

### **Questions or problems?**

Contact the Help Desk at 765-361-6400 or [helpdesk@wabash.edu](mailto:helpdesk@wabash.edu).